

## Planning and application description

Planning and application, checklists for the system application of  
Floortec 2K-Sentopur 570

### General planning instructions

- This document should be made available to all persons involved in the coating process so that everyone is informed about the procedure and the individual steps. This is the only way to ensure a flawless process sequence.
- If feasible, the installation of the trowel-finished floor system should be scheduled in the project planning to take place after all other trades or, if possible, towards the end to prevent mechanical damage.
- A time window of 4-7 working days should be provided for the basic work steps of the system setup.
- Allow extra time for additional work, such as preliminary filling, etc. (for the implementation as well as for extended drying times).
- The surfaces may be walked on carefully approximately 12 hours after completion of the 2K-PU sealer. Complete curing of the 2K-PU sealer takes 7 days.
- If the finished surfaces are to be covered, this can preferably be done with Decorators Nonwoven Cover or Felted Cardboard Sheet. If, for example, the areas are accessed with rolling scaffolding or similar in the course of further construction work, they must also be covered with hardboard. Masking directly on the finished floor surface must be avoided at all costs, as they can lead to discoloration and peeling of the transparent top sealer.
- During the implementation period, other craftspeople should avoid the rooms being coated, and the surfaces should be protected against dust or dirt contamination.
- In case of underfloor heating, turn it off or turn the temperature down to max. +15°C to 18°C at least 3 days before the commencement of work. The underfloor heating may not be recommissioned until at least 7 days after its application.
- Observe the minimum drying times and individual residual moisture, especially for newly constructed or newly to be constructed screed surfaces
- Even beforehand, observe room, substrate and material temperatures.
- Avoid direct sunlight through large windows on the surfaces to be treated. Close shutters and/or cover windows.

## Construction site equipment

- If possible, check the tools and equipment required for the respective work process one day in advance and prepare them if necessary
- Also provide the required materials in good time and check quantities
- Set up the mixing station in such a way that a flawless mixing process and material transport to the application site is guaranteed

## List of materials and tools

Materials	Article number	Consumption	Completed
<i>Priming with</i>			
Multi Primer LF 3084	3084	approx. 50–80 g/m <sup>2</sup> undiluted material	
<i>Filling with</i>			
Floor Leveling Compound C15 3116 or Floor Leveling Compound FX 3109	3116 3109	approx. 4.5 kg/m <sup>2</sup> with 3 mm layer thickness approx. 4.5 kg/m <sup>2</sup> with 3 mm layer thickness	
Perimeter Insulation Strips SK 3018 (optional)	3018	as required	
<i>Priming with</i>			
Floortec 2K-EP Base 568	568	Approx. 35 g/m <sup>2</sup>	
<i>Create the floor surfaces with</i>			
Floortec 2K-Sentopur 570 mixed with Floortec PU Hardener 571	570 571	Approx. 2.6 kg/m <sup>2</sup> prepared mixture, incl. hardener	
<i>Double sealing with</i>			
Floortec 2K-Purolid T 876 mixed with Floortec PU Hardener 879	876 879	2x approx. 100–110 ml/m <sup>2</sup> prepared mixture, incl. hardener	
Floortec Safe-Step 841 (optional)	841	3% by weight, approx. 1.5 g/m <sup>2</sup>	

Ensure that the required materials and tools are available on time and in adequate amounts.

List of materials and tools			
Tools and accessories	Article number	Consumption	Completed
Powerful agitator e.g. Collomix mixer Xo 4 R HF	3347.0004	1 unit per application team	
Collomix mortar mixing tool DLX 152 HF	3347.0152	1 unit per application team	
Collomix coupling HEXAFIX®/M14 exterior	3347.0015	optional depending on agitator	
Collomix stirring rod KR 120 HF	3347.0012	1 unit per application team	
Adapter for HEXAFIX® agitators	1841.0300	optional depending on stirrer	
Mixing Bucket	1558.0030	2 unit per application team	
Surface filler knife (size 25, 40 or 50 cm wide, depending on the design of the texture)	1828.0025	1 unit per application team	
	1828.0040		
	1828.0050		
Broom handle and equipment shaft with handle socket	1348.0140	1 unit per application team	
	1347.0000		
Height-adjustable metal squeegee incl. handle socket	1324.0560.0008	1 unit per application team	
Double-edge Notched Blade TKB R2 (for 3115)	1326.0028.0012	2 units per application team	
Notched Blades, type 48 (for 570)	1326.0028.0048	2 units per application team	
De-Aerating Roller	1137.0026	1 unit per application team	
Spiked Screed Soles, Pointed/Blunt	1196.0001	2 pairs per application team	
Overshoes	1846.0000	As required (pack of 20)	
Vacuum cleaner, e.g. Mirka industrial vacuum cleaner 1230 M AFC 3202 with cleaning set for Mirka industrial vacuum cleaner	3202.1230	–	
	3202.0005		
Double-sided Spatula with Soft Handle	1289.0270	1 piece per applicator	
Plastic bucket, (empty container)	3164.18.6.6090	1 piece per container of 570	
Microfiber Paint Roller	1221.0025	1 unit per application team	
Single-disc Grinder	3694.0000	–	
Processing Pad with microcellular rubber pad to attach discs	3694.0010	1 piece per grinder	
Paper sanding disc, type P 60 for single-disc grinder	3694.0011.60	1 piece per 100 m <sup>2</sup>	
Bucket Trowel, 10 cm	3782.0010	1 unit per application team	
Stopwatch or timer	–	1 unit per application team	
Knee roller for floor work	1457.0001	–	

Ensure that the required materials and tools are available on time and in adequate amounts.

A sufficient number of workers for the individual work steps is crucial for the success of the coating process. In particular, floor-coating tasks are usually limited by tight scheduling. If the application deadlines are inflexible, replacement personnel should be available on call if necessary. The following tables can serve as a rough orientation for personnel requirements. Object-related planning is essential, for example in areas with complicated layouts.

**Recommended minimum number of workers for leveling with filler**

Scope	Total number of workers	For mixing and transport	For application and leveling
Up to approx. 100 m <sup>2</sup>	3	2	1
Up to approx. 200 m <sup>2</sup>	5	3	2
Up to approx. 600 m <sup>2</sup>	7	4	3

**Recommended minimum number of staff for application of Floortec 2K-Sentopur 570**

Scope	Total staff <sup>1)</sup>	Mixing and transport	Application and leveling	Texturing / design
Up to approx. 100 m <sup>2</sup>	6	4	1	1
Up to approx. 200 m <sup>2</sup>	10	6	2	2
Up to approx. 600 m <sup>2</sup>	10–14	6–8	2–3	2–3

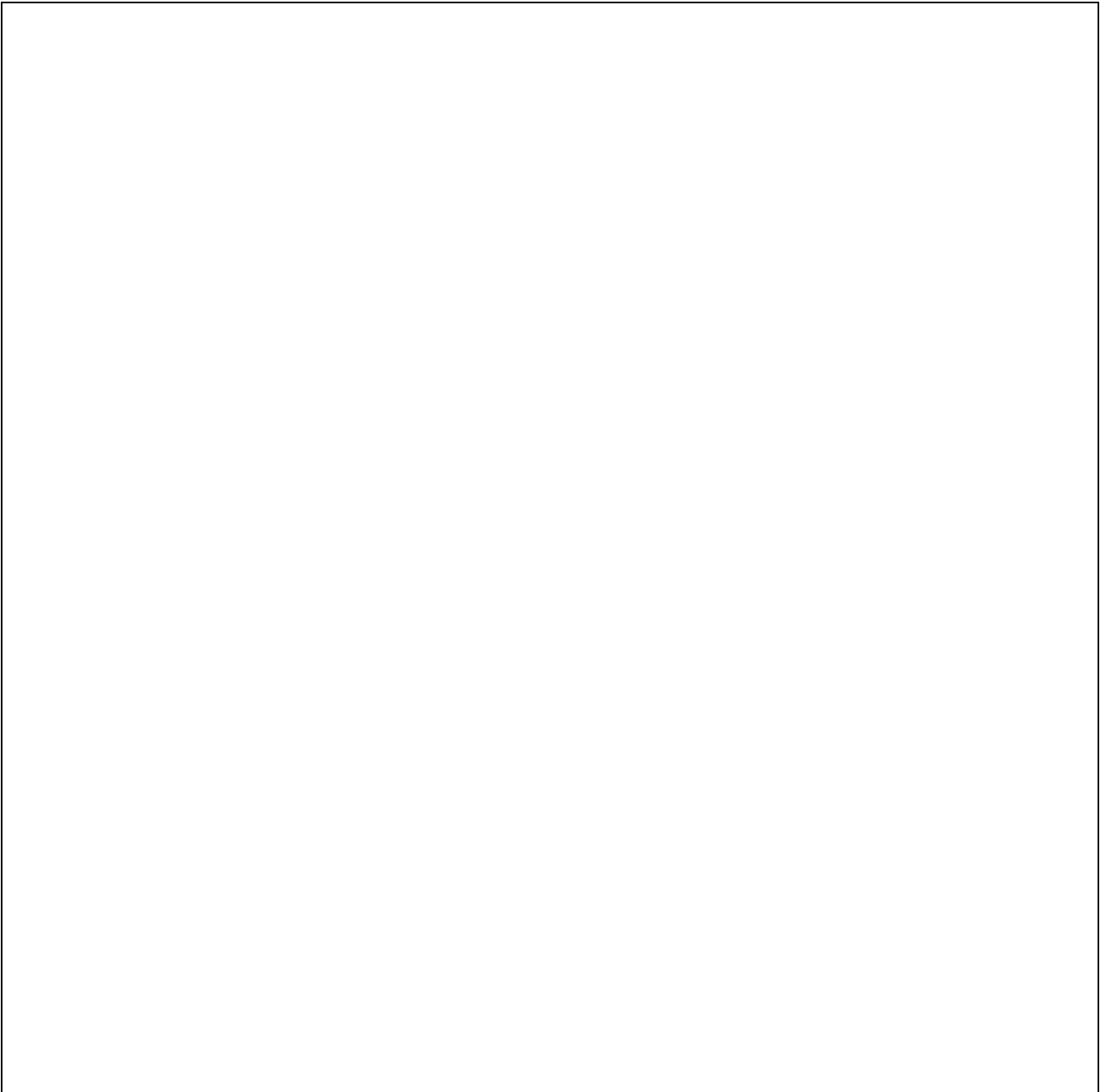
<sup>1)</sup> The data pertains to the single-colored implementation. For two-colored implementation, schedule 1 to 2 additional persons in each case.

**Recommended minimum number of employees for priming and sealing**

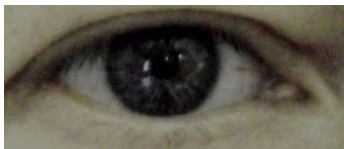
Scope	Total number of workers
Up to approx. 100 m <sup>2</sup>	1–2
Up to approx. 200 m <sup>2</sup>	2–3
Up to approx. 600 m <sup>2</sup>	3–4

**Detailed planning** Particularly for complex, e.g. contorted, surfaces, allocate the personnel such that the surfaces can be coated smoothly and quickly. The routes to be taken and where material is poured must be planned such that the work can always be done wet in wet, particularly when several application teams are involved. Pay attention to the open time (max 20 min, depending on site conditions), especially when re-smoothing. Depending on the project, it is advisable to prepare a drawing of the respective room and to allocate the teams and jointly determine the implementation process based on this drawing.

Sketch of the respective room for the planning of the application paths, application course, and design orientation



**Substrate testing**



Inspect the substrate for load-bearing capacity and cracks. Visual inspection. Expansion joints must be retained.



Scoring test, moisture measurement, tensile adhesion test, etc. Clearly mark the start and end points of the joints on the walls.



Observe substrate moisture (film test 15 min).

Observe the information on substrate pre-treatment in the data sheets of the system products.

**Day 1:  
Leveling of the floor surfaces**



Vacuum and clean prepared floor surfaces. Install Perimeter Insulation Strips SK 3018. Check compatibility and adhesion to the substrate, especially for finished surfaces, in advance by conducting a sample bond.



Priming with Multi Primer LF 3084, matched to the absorbency of the substrate (diluted 1:1 to 1:3 with water) New screeds may have increased absorbency, so prime twice if necessary to avoid the formation of pores in the subsequent leveling compound as far as possible.

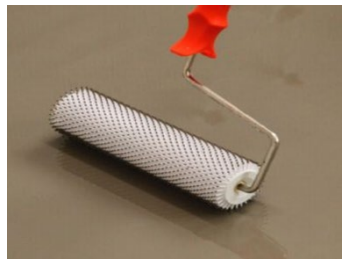


Prepare Floor Leveling Compound C15 3116 or Floor Leveling Compound FX 3109 without lumps using a suitable mixer (e.g. Collomix Xo 4 R HF 3347) and stirring rod. Ensure that the correct amount of water is added. Use a measuring bucket or water dosing device. Wait at least 3 minutes and stir again before pouring.

**Day 1:  
Leveling of the floor surfaces**



Filling:  
Spread Floor Leveling Compound C15 3116 using a squeegee (Height-Adjustable Metal Squeegee 1324 with Double-edge Notched Blade TKB R2). Spread Floor Leveling Compound FX 3109 with a Height-Adjustable Metal Squeegee 1324 (without notched blades) or with the Stainless Steel Smoothing Trowel 3792. Minimum layer thickness 3 mm.



Work through the fresh leveling layer with the de-aerating roller in a criss-cross pattern

**Day 2:  
Priming with Floortec 2K-EP  
Base 568**



Check substrate (leveling compound applied)!  
It is essential to observe the residual moisture of the leveling layer (film test 15 min).



For the further build-up, sand the smoothly filled surfaces in advance using a single-disc grinder (grit size P60 / P80 as a cleaning step) and vacuum. Also clean and vacuum the edge insulation strip of any residual leveling compound.



Prime coat:  
Apply Floortec 2K-EP Base 568 evenly and burr-free using the Double-sided Spatula with Soft Handle 1289. Fill any pores in the process.

**Day 3:  
Application of Floortec 2K-  
Sentopur 570**



Mix Floortec 2K-Sentopur 570 with Floortec PU Hardener 571 using a suitable stirrer, e.g. Collomix stirrer Xo 4 R HF 3347 and Collomix stirring rod KR 120 HF 3347.

Stirring time: 2 minutes. Use a stopwatch or timer.

Ensure the components are completely mixed and there are not streaks or lumps. After mixing, transfer to a clean container and stir again.



**Coating:**

Always pour all of the mixed material out of the respective containers immediately. Spread Floortec 2K-Sentopur 570 using a squeegee. Always completely scrape off surfaces with the squeegee and avoid material build-up.



Height-Adjustable Metal Squeegee 1324 with Notched Blade 1326, type 48 (1326.0028.0048).



Then texture and design individually using the Surface Filler Knife 1828 with Handle Socket. It is best to work diagonally or in a diagonal direction. Do not level at right-angles or linearly. The size and type of the tool determines the character of the texture. The smaller the tool, the more concise the texture pattern.

Workers should wear spiked screed soles, blunt.

Make absolutely sure that no water, e.g. in the form of drops of sweat, etc., gets onto the fresh surfaces. This leads to irreparable damage to the coating film. Immediately remove adhesive tapes while still fresh. After approx. 6 hours, the surfaces can be carefully walked on in socks with Shoe Protectors 1846.



## System build-up in individual steps

### Day 4: Sealing with Floortec 2K- Purolid T 876



**Sealing:**  
Floortec 2K-Purolid T 876 is mixed according to the instructions and applied twice within 4–16 hours with the Microfiber Paint Roller 1221. Only enter the areas with clean shoe soles and wear Shoe Protectors 1846. Dirt contamination results in damage to the newly created surfaces. Application of the material is carried out in approx. 1 m wide strips transverse to the main direction of incidental light. The material that is still wet on the surface is then rolled out evenly in one direction towards the light. Carry out both operations within 16 hours. If not possible, perform intermediate sanding with a PU Sanding and Cleaning Pad 3694.0400.0002.

### Day 5: Remaining work

Cut through the perimeter insulation strips flush with the surface using a cup cutter and remove.

Vacuum the surfaces as required. Use a hard floor/brush adapter.

## Notes

### Cleaning and maintenance instructions

After completion of the work and handover of the surfaces to the user, the cleaning and care instructions 570p must also be handed over. By distributing the cleaning and maintenance instructions, the contractor complies with their obligations in DIN 18365.

### Further information

Follow the instructions on the data sheets of the products used.

## Remark

This information sheet is based on extensive development work and years of practical experience. The translation corresponds to the current German version, in compliance with the German laws, regulations, standards and guidelines. Its content does not constitute a contractual legal relationship. The user/buyer is not released from the responsibility of checking our products to ensure they are suitable for the intended application. In addition, our general terms of business apply.

When a new version of this data sheet with updated information is published, the previous version no longer applies. The current version is available on our website.

Brillux  
Weseler Straße 401  
48163 Münster  
GERMANY  
Phone +49 251 7188-0  
Fax +49 251 7188-105  
info@brillux.de  
www.brillux.com